

FOR LEASE

1022 SW Salmon *Proudly Portland*



PORTLAND, OR 97205



1022 SW Salmon - 1921

- > Creative office space
- > Exceptionally well-maintained office building
- > Efficient floor plans, oversized windows with lots of natural light
- > Perimeter CBD; easy access to I-405, Hwy 26, streetcar, MAX and parking lot
- > Walking distance to many restaurants, cafes, banks and Portland Art Museum
- > Building bike storage and showers

AVAILABILITIES

- > **Suite 210** 4,877 RSF \$25.00/SF/FS
- > **Suite 450** 3,725 RSF \$26.00/SF/FS



JOE BEEHLER
503 499 0065
PORTLAND, OR
joe.beehler@colliers.com

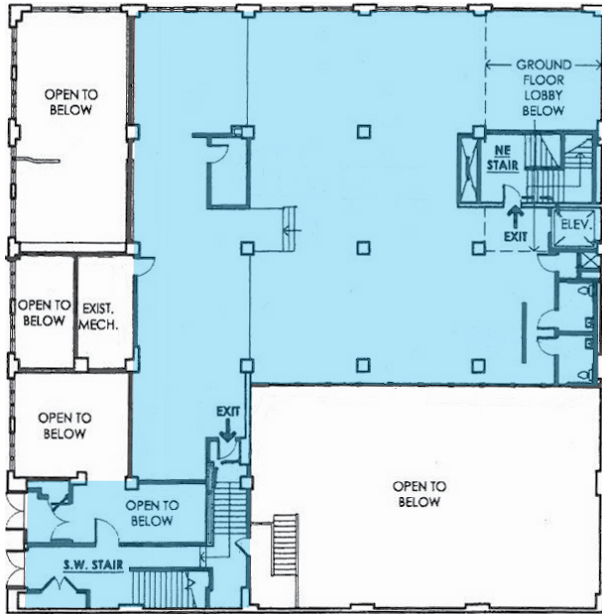
GREG GONZALEZ
503 499 0060
PORTLAND, OR
greg.gonzalez@colliers.com

COLLIERS INTERNATIONAL
851 SW Sixth Avenue, Suite 1200
Portland, Oregon 97204
www.colliers.com

Floor Plans

1022 SW SALMON STREET PORTLAND, OR 97204

SUITE 210
4,877 SF



SUITE 450
3,725 SF

